

NOTE: HANDRAIL EXTENDING MORE THAN 8" BEYOND THE FRAMES OF THE LIFT MAY REDUCE LATCH CLEARANCE REQUIRED BY ANSI A117.1 AND ADAAG.

1 PLAN AT PARAPET
101 SCALE: 1-1/2" = 1'-0"

GC NOTE: ALL CRITICAL SITE CONDITIONS MUST BE VERIFIED IN THE FIELD AFTER THE AREA HAS BEEN PREPARED AND PRIOR TO THE LIFT BEING RELEASED, EXTRA COSTS INCURRED WITH MODIFYING THE UNIT AT THE FACTORY BY THE MANUFACTURER DUE TO CHANGES IN THE SITE CONDITIONS WILL BE THE RESPONSIBILITY OF THE GENERAL CONTRACTOR. TOLERANCES IN FIELD DIMENSIONS ARE +/- 1/8 INCH; NOTIFICATION TO HANDI-LIFT OF ANY VARIATIONS FROM THIS TOLERANCE IS THE RESPONSIBILITY OF THE GENERAL CONTRACTOR.

The information contained in this drawing constitutes the Intellectual Property, including, but not limited to knowledge, trade secrets, and proprietary information which is the exclusive property of Handi-Lift, Inc. All information contained in this drawing is to be held in the strictest confidence by the recipient, and is not to be copied, disclosed to, or transmitted to any third parties without the express written authorization of Handi-Lift, Inc. ©2008 Handi-Lift, Inc.

CODE NOTE

REVISION 1	
REVISION 2	

NOT TO SCALE

AREA ACCESS, INC.
7131 GATEWAY COURT
MANASSAS, VA 20109
(703) 396-4949
(800) 333-AREA

LIFT DESIGN BY
HANDI-LIFT, INC.
730 GARDEN STREET
CARLSTADT, NEW JERSEY 07072 U.S.A.
PH: (800) 432-LIFT FAX: (201) 933-0050
INTERNET ADDRESS: www.handi-lift.com

DRAWN BY	BK	CHECKED BY	DB
----------	----	------------	----

LOCATION:
BOEING ADA LIFT
FORT BELVOIR, VA

DATE: 11-09-2010	PROJECT NO.
---------------------	-------------

TYPE OF LIFT: CUSTOM	PAGE NO. 1 OF 5
-------------------------	--------------------

GC NOTE: ALL CRITICAL SITE CONDITIONS MUST BE VERIFIED IN THE FIELD AFTER THE AREA HAS BEEN PREPARED AND PRIOR TO THE LIFT BEING RELEASED, EXTRA COSTS INCURRED WITH MODIFYING THE UNIT AT THE FACTORY BY THE MANUFACTURER DUE TO CHANGES IN THE SITE CONDITIONS WILL BE THE RESPONSIBILITY OF THE GENERAL CONTRACTOR. TOLERANCES IN FIELD DIMENSIONS ARE +/- 1/8 INCH; NOTIFICATION TO HAND-LIFT OF ANY VARIATIONS FROM THIS TOLERANCE IS THE RESPONSIBILITY OF THE GENERAL CONTRACTOR.

The information contained in this drawing constitutes the Intellectual Property, including, but not limited to knowledge, trade secrets, and proprietary information which is the exclusive property of Handi-Lift, Inc. All information contained in this drawing is to be held in the strictest confidence by the recipient, and is not to be copied, disclosed to, or transmitted to any third parties without the express written authorization of Handi-Lift, Inc. ©2008 Handi-Lift, Inc.

CODE NOTE

REVISION 1	
REVISION 2	

NOT TO SCALE

AREA ACCESS, INC.
 7131 GATEWAY COURT
 MANASSAS, VA 20109
 (703) 396-4949
 (800) 333-AREA

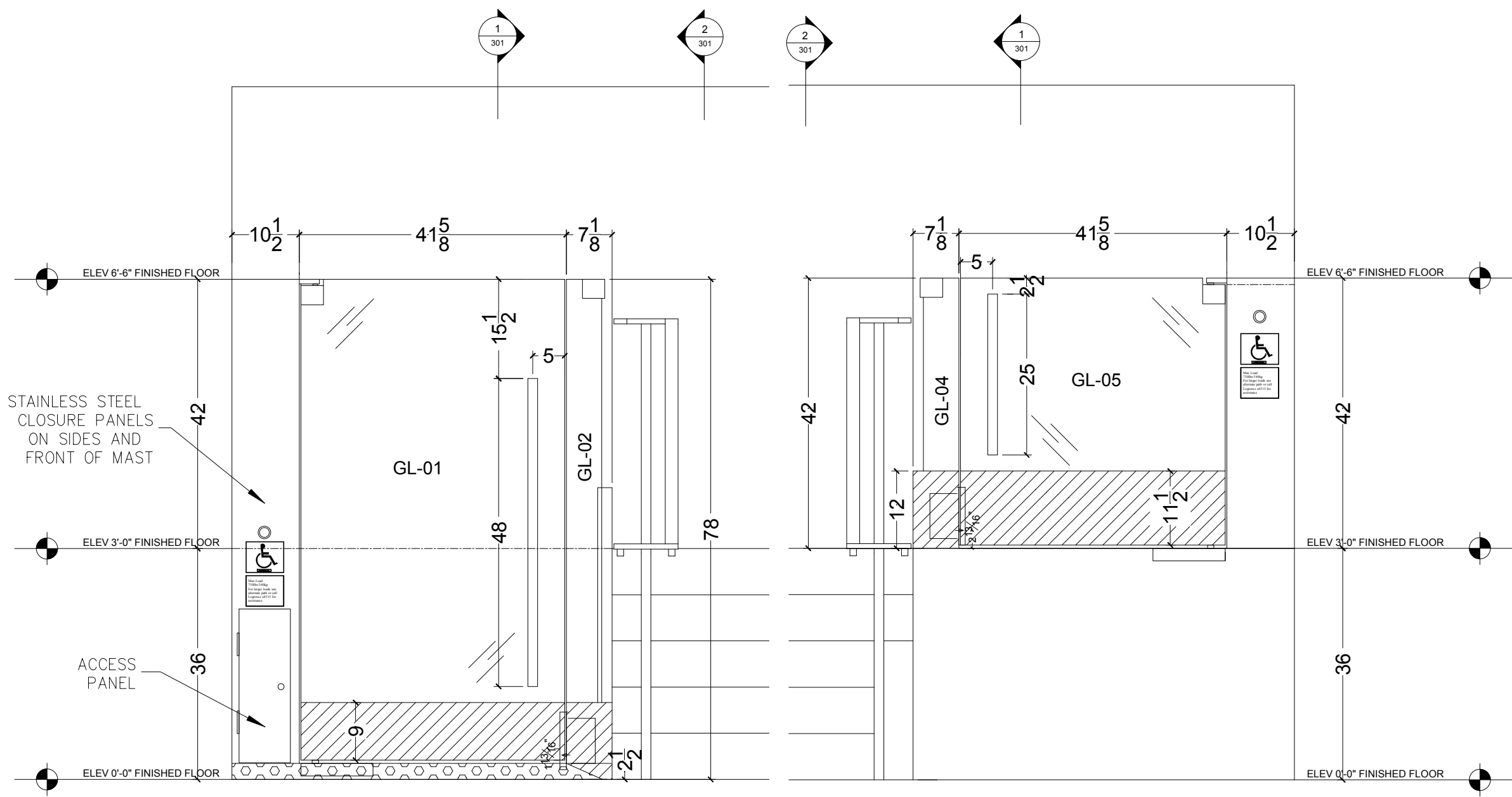
LIFT DESIGN BY
 HANDI-LIFT, INC.
 730 GARDEN STREET
 CARLSTADT, NEW JERSEY 07072 U.S.A.
 PH: (800) 432-LIFT FAX: (201) 933-0050
 INTERNET ADDRESS: www.handi-lift.com

DRAWN BY	BK	CHECKED BY	DB
----------	----	------------	----

LOCATION:
 BOEING ADA LIFT
 FORT BELVOIR, VA

DATE:	PROJECT NO.
11-09-2010	

TYPE OF LIFT:	PAGE NO.
CUSTOM	2 OF 5



1 ELEVATIONS
 201 SCALE: 1-1/2" = 1'-0"

2 ELEVATIONS
 201 SCALE: 1-1/2" = 1'-0"

GC NOTE: ALL CRITICAL SITE CONDITIONS MUST BE VERIFIED IN THE FIELD AFTER THE AREA HAS BEEN PREPARED AND PRIOR TO THE LIFT BEING RELEASED, EXTRA COSTS INCURRED WITH MODIFYING THE UNIT AT THE FACTORY BY THE MANUFACTURER DUE TO CHANGES IN THE SITE CONDITIONS WILL BE THE RESPONSIBILITY OF THE GENERAL CONTRACTOR. TOLERANCES IN FIELD DIMENSIONS ARE +/- 1/8 INCH; NOTIFICATION TO HANDI-LIFT OF ANY VARIATIONS FROM THIS TOLERANCE IS THE RESPONSIBILITY OF THE GENERAL CONTRACTOR.

The information contained in this drawing constitutes the Intellectual Property, including, but not limited to knowledge, trade secrets, and proprietary information which is the exclusive property of Handi-Lift, Inc. All information contained in this drawing is to be held in the strictest confidence by the recipient, and is not to be copied, disclosed to, or transmitted to any third parties without the express written authorization of Handi-Lift, Inc. ©2008 Handi-Lift, Inc.

CODE NOTE

REVISION 1

REVISION 2

NOT TO SCALE

AREA ACCESS, INC.

7131 GATEWAY COURT
MANASSAS, VA 20109
(703) 396-4949
(800) 333-AREA

LIFT DESIGN BY

HANDI-LIFT, INC.

730 GARDEN STREET
CARLSTADT, NEW JERSEY 07072 U.S.A.
PH: (800) 432-LIFT FAX: (201) 933-0050
INTERNET ADDRESS: www.handi-lift.com

DRAWN BY	BK	CHECKED BY	DB
----------	----	------------	----

LOCATION:

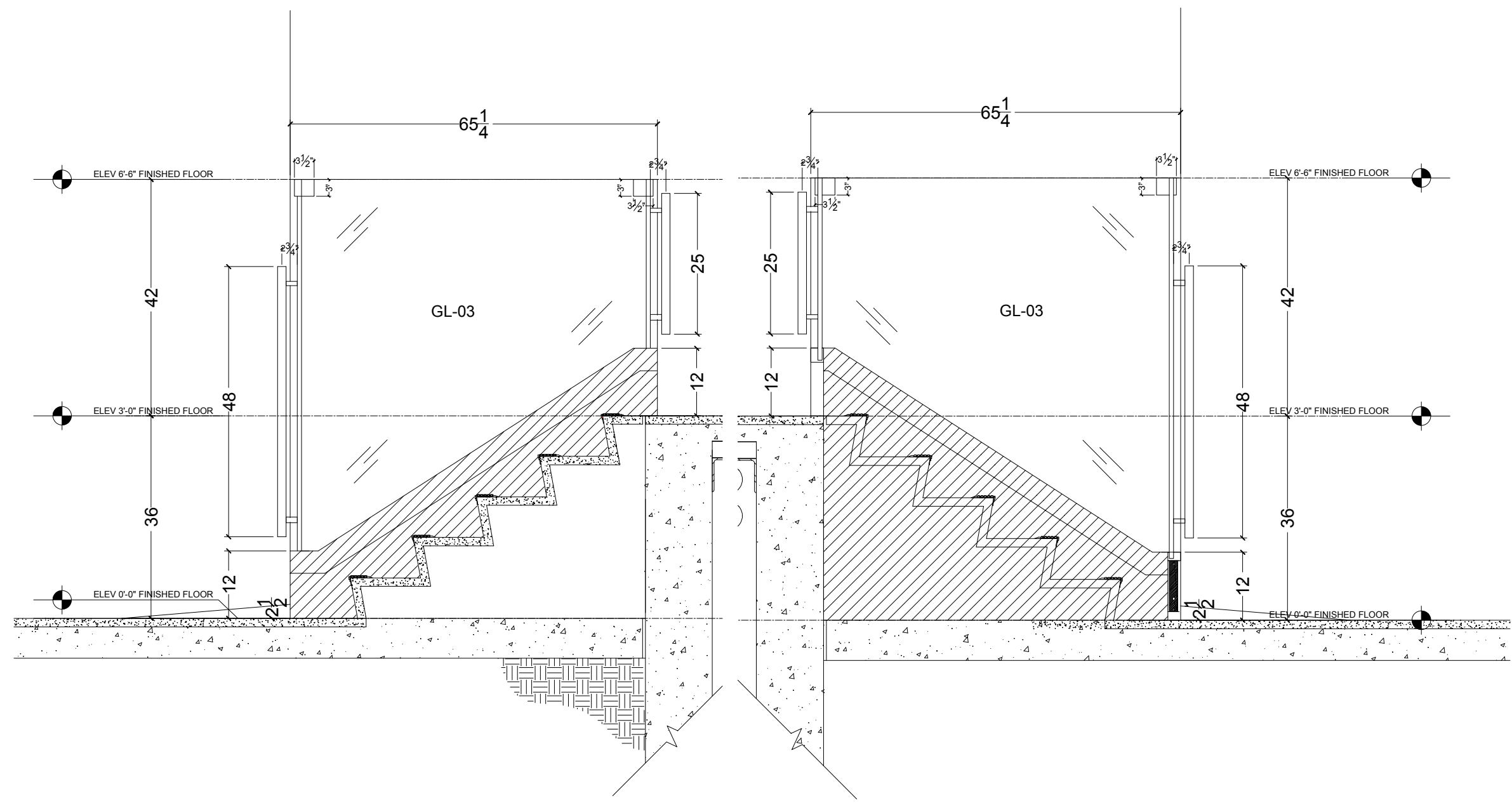
BOEING ADA LIFT
FORT BELVOIR, VA

DATE:
11-09-2010

PROJECT NO.

TYPE OF LIFT:
CUSTOM

PAGE NO.
3 OF 5



1 SECTION
301 SCALE: 1-1/2" = 1'-0"

2 SECTION
301 SCALE: 1-1/2" = 1'-0"

NOTES

- 1) POWER SOURCE WIRING AND WIRE CHASES FROM CALL STATIONS TO MAST BY OTHERS. DISCONNECT BY AREA ACCESS.
- 2) THERE MUST BE A MINIMUM OF 6' 8" OF CLEAR HEADROOM SPACE ABOVE THE TOP LANDING.
- 3) FLOOR AREA BENEATH WHEELCHAIR LIFT MUST BE SMOOTH AND LEVEL FOR PROPER OPERATION OF MACHINE. FLOOR BELOW LIFT BY OTHERS.
- 4) PROVIDE BACKING FOR SUPPORT OF THE MACHINE HOUSING. THE HOUSING MUST BE FASTENED TO THE WALL BEHIND. WALL AND BACKING BY OTHERS.
- 5) ALL LIGHTING BY OTHERS. PROVIDE NOT LESS THAN (5) FOOT CANDLES.

SPECIFICATIONS

DRIVE: ACME SCREW WITH DRIVE SCREW SAFETY DEVICE
 CAPACITY: 750 LBS @ 9 F.P.M.
 MOTOR: 1750 RPM, 1 1/2 HP, 230VAC, 20A, INSTANT REVERSING-SINGLE PHASE
 POWER SUPPLY: 230VAC, 20A, SINGLE PHASE, 60HZ
 LOW VOLTAGE: 24V CONTROL CIRCUIT
 PLATFORM: 36 X 51 NON-SKID SURFACE
 MANUAL OPERATION: IN THE EVENT OF A POWER FAILURE, THE UNIT CAN BE LOWERED MANUALLY BY AN ATTENDANT (WRENCH REQUIRED)
 BAKED ELECTROSTATIC APPLIED POWDER COATING -PEARL WHITE TEXTURE
 PLATFORM SIDE ENCLOSURES 42" HIGH
 EMERGENCY STOP AND ALARM W/BATTERY BACK-UP
 CUSTOM GLASS AND STAINLESS STEEL PLATFORM SIDES
 CUSTOM GLASS AND STAINLESS STEEL THREE SIDED ENCLOSURE WITH GLASS SET TO INSIDE OF FRAME
 STAINLESS STEEL CLOSURE PANELS ON SIDES AND FRONT OF MAST
 STAINLESS STEEL ELECTRICAL ACCESS DOOR ON LOWER LANDING SIDE AND TOP COVER
 1/2" TEMPERED GLASS
 STAINLESS STEEL FINISH #6
 DORMA BTS-75 ADA DOOR CLOSERS
 FOLGER ADAMS 401R DEAD BOLT STYLE INTERLOCKS
 RAMP AND PLATFORM COVERED IN NON-SKID RUBBER
 ELECTRIC STRIKE TIMER CIRCUIT
 HEAVY-DUTY TRANSFORMER
 BATTERY BACK-UP
 RIGID INSULATION MOUNTED INSIDE SHROUD AND STAINLESS STEEL ENCLOSURE

GC NOTE: ALL CRITICAL SITE CONDITIONS MUST BE VERIFIED IN THE FIELD AFTER THE AREA HAS BEEN PREPARED AND PRIOR TO THE LIFT BEING RELEASED, EXTRA COSTS INCURRED WITH MODIFYING THE UNIT AT THE FACTORY BY THE MANUFACTURER DUE TO CHANGES IN THE SITE CONDITIONS WILL BE THE RESPONSIBILITY OF THE GENERAL CONTRACTOR. TOLERANCES IN FIELD DIMENSIONS ARE +/- 1/8 INCH; NOTIFICATION TO HANDI-LIFT OF ANY VARIATIONS FROM THIS TOLERANCE IS THE RESPONSIBILITY OF THE GENERAL CONTRACTOR.

The information contained in this drawing constitutes the Intellectual Property, including, but not limited to knowledge, trade secrets, and proprietary information which is the exclusive property of Handi-Lift, Inc. All information contained in this drawing is to be held in the strictest confidence by the recipient, and is not to be copied, disclosed to, or transmitted to any third parties without the express written authorization of Handi-Lift, Inc. ©2008 Handi-Lift, Inc.

CODE NOTE

REVISION 1

REVISION 2

NOT TO SCALE

AREA ACCESS, INC.

7131 GATEWAY COURT
 MANASSAS, VA 20109
 (703) 396-4949
 (800) 333-AREA

LIFT DESIGN BY

HANDI-LIFT, INC.

730 GARDEN STREET
 CARLSTADT, NEW JERSEY 07072 U.S.A.
 PH: (800) 432-LIFT FAX: (201) 933-0050
 INTERNET ADDRESS: www.handi-lift.com

DRAWN BY	BK	CHECKED BY	DB
-----------------	-----------	-------------------	-----------

LOCATION:

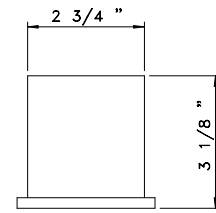
BOEING ADA LIFT
 FORT BELVOIR, VA

DATE:
 11-09-2010

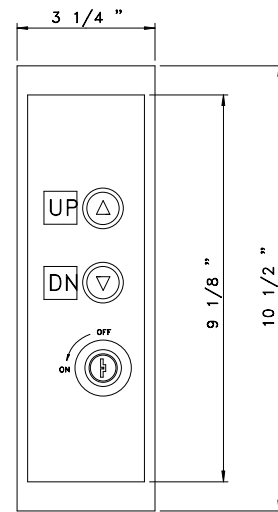
PROJECT NO.

TYPE OF LIFT:
 CUSTOM

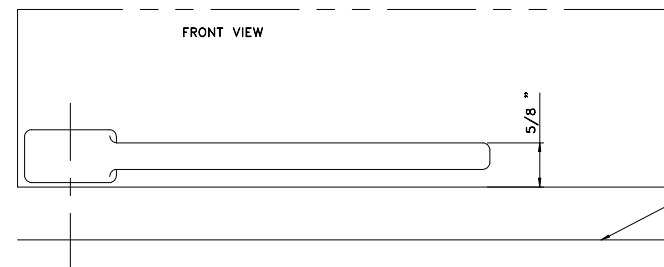
PAGE NO.
 4 OF 5



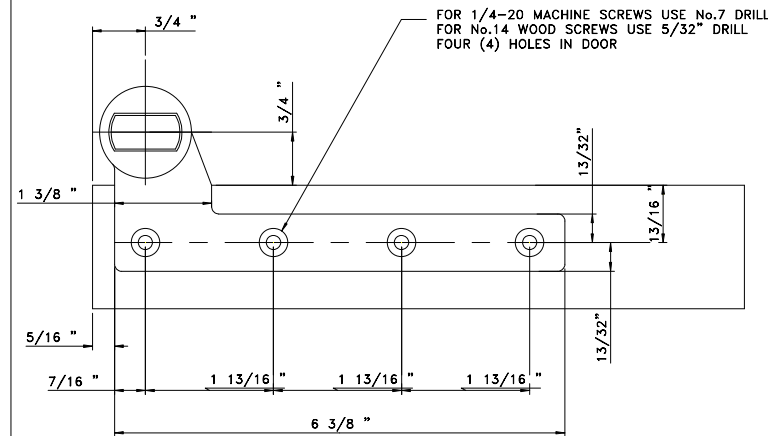
EPCO CALL STATION PLAN VIEW



EPCO CALL STATION PLAN VIEW

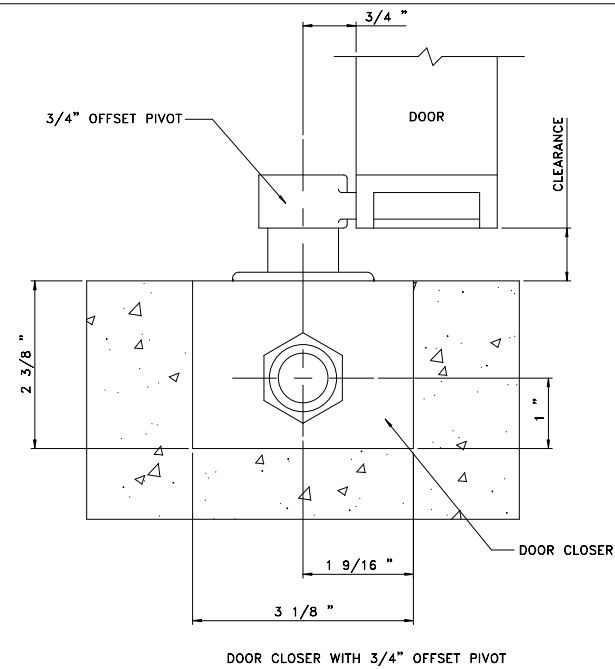


FINISHED FLOOR



FOR 1/4-20 MACHINE SCREWS USE No.7 DRILL
FOR No.14 WOOD SCREWS USE 5/32" DRILL
FOUR (4) HOLES IN DOOR

DORMA DOOR BOTTOM PIVOT (3/4" OFFSET)



DOOR CLOSER WITH 3/4" OFFSET PIVOT

GC NOTE: ALL CRITICAL SITE CONDITIONS MUST BE VERIFIED IN THE FIELD AFTER THE AREA HAS BEEN PREPARED AND PRIOR TO THE LIFT BEING RELEASED, EXTRA COSTS INCURRED WITH MODIFYING THE UNIT AT THE FACTORY BY THE MANUFACTURER DUE TO CHANGES IN THE SITE CONDITIONS WILL BE THE RESPONSIBILITY OF THE GENERAL CONTRACTOR. TOLERANCES IN FIELD DIMENSIONS ARE +/- 1/8 INCH; NOTIFICATION TO HANDI-LIFT OF ANY VARIATIONS FROM THIS TOLERANCE IS THE RESPONSIBILITY OF THE GENERAL CONTRACTOR.

The information contained in this drawing constitutes the Intellectual Property, including, but not limited to knowledge, trade secrets, and proprietary information which is the exclusive property of Handi-Lift, Inc. All information contained in this drawing is to be held in the strictest confidence by the recipient, and is not to be copied, disclosed to, or transmitted to any third parties without the express written authorization of Handi-Lift, Inc. ©2008 Handi-Lift, Inc.

CODE NOTE

REVISION 1

REVISION 2

NOT TO SCALE

AREA ACCESS, INC.

7131 GATEWAY COURT
MANASSAS, VA 20109
(703) 396-4949
(800) 333-AREA

LIFT DESIGN BY

HANDI-LIFT, INC.

730 GARDEN STREET
CARLSTADT, NEW JERSEY 07072 U.S.A.
PH: (800) 432-LIFT FAX: (201) 933-0050
INTERNET ADDRESS: www.handi-lift.com

DRAWN BY **BK** CHECKED BY **DB**

LOCATION:

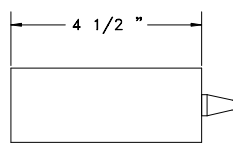
BOEING ADA LIFT
FORT BELVOIR, VA

DATE:
11-09-2010

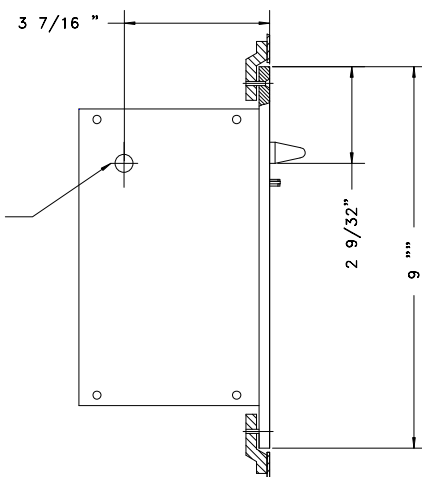
PROJECT NO.

TYPE OF LIFT:
CUSTOM

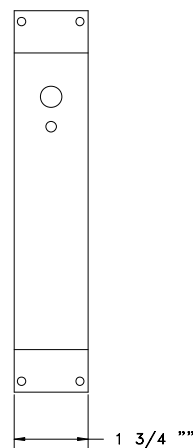
PAGE NO.
5 OF 5



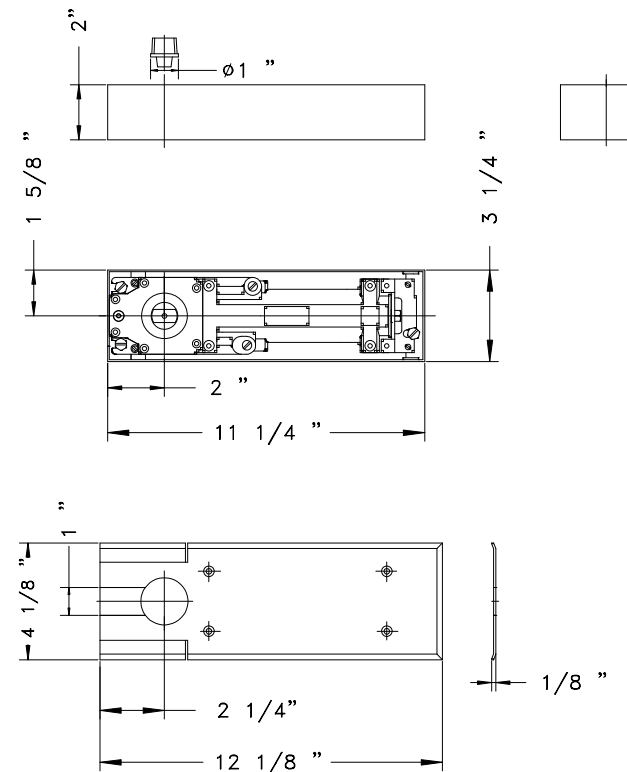
FA-401 PLAN VIEW



FA-401 SIDE VIEW



FA-401 FRONT VIEW



DORMA BTS 75V DOOR CLOSER